



*Crafters Make
Big Contributions*

soaring

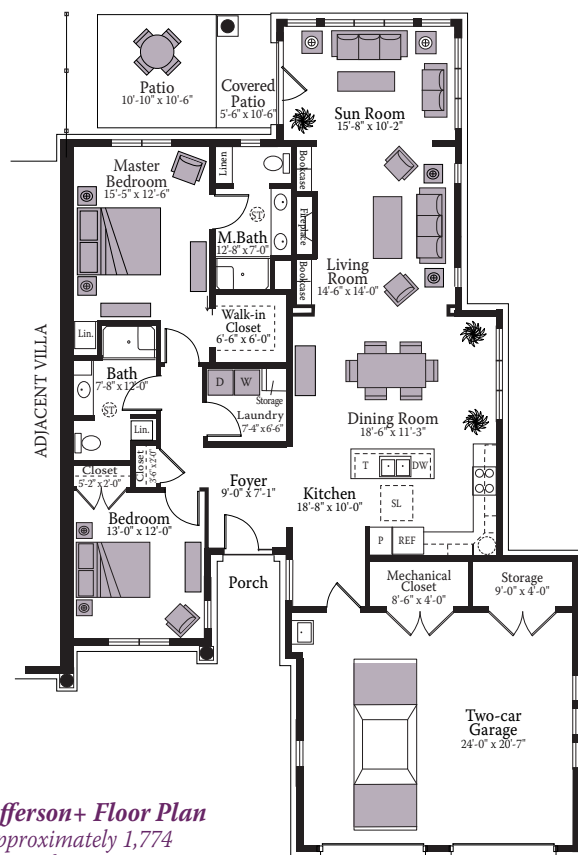
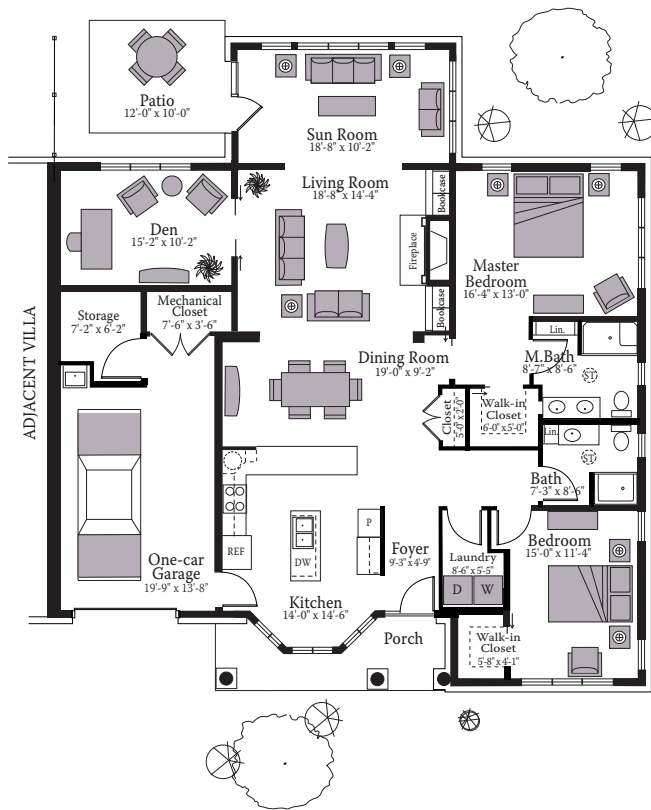
A PUBLICATION OF MENNONITE HOME COMMUNITIES

SPRING 2019

Combined Creativity	p4
Country Store	p5
QCD Gifting Maximizes Stewardship	p6

Lancaster Floor Plan
Approximately 2,058 square feet

All Lancaster units will feature a one-car garage.



Jefferson+ Floor Plan
Approximately 1,774 square feet

Jefferson+ units feature a two-car garage and Jefferson units will have a one-car garage.

New Villa Designs Unveiled!

February was an exciting month for Woodcrest Villa as the Marketing team revealed two brand new villa designs—the Jefferson and the Lancaster. These new villas will be offered as part of the Hedera Place and Morelle Place expansion. Hedera Place will be the first to be built and includes 20 villas – four Lancasters and 16 Jeffersons. Morelle Place will follow closely behind with 14 total villas—six Lancasters and eight Jeffersons.

The Jefferson is modeled after the popular Fulton floor plan and the Lancaster expands upon the Cameron floor plan.

Both the Jefferson and the Lancaster feature enhanced kitchen designs to create more storage and counter space as well

Both the Jefferson and the Lancaster feature enhanced kitchen designs to create more storage and counter space . . .

as an open feel as you transition from the kitchen to the dining room. Quartz countertops, luxury vinyl plank floors and stainless steel appliances will provide an upscale cooking environment.

In addition, more storage was added to both floor plans. Each villa will have a walk-in closet, laundry room and a separate storage area located in the garage.

Interest in what could be the final phase of villas is high! After a special event for waiting list members in February, priority reservations were off to a brisk start.

* Dimensions shown are approximate only. Furniture placement is for illustrative purposes only. Plans do not reflect the electrical, television or telephone outlet locations. Plans subject to modification.

These new villas will be offered as part of the Hedera Place and Morelle Place expansion.



Morelle Place PHASE II

Hedera Place PHASE I

■ Lancaster Villas
■ Jefferson Villas

**Tree placement is illustrative only. Maps are not to scale.*

Pheasant Pointe Forges Ahead

A beautiful new apartment building is taking shape in the northern corner of the Woodcrest Villa campus. The addition of Pheasant Pointe brings 39 beautiful new apartments to the community. Each week brings exciting changes as the building draws closer to completion. Incoming residents are already becoming a part of the community with several enjoying the fitness center, pool and classes. This is the first apartment building constructed at Woodcrest Villa since Bluebird in 2001. Residents are expected to move in this fall.



Aerial view of Pheasant Pointe while under construction earlier this year.

Combined Creativity

Located in the heart of the VIVA Centre, the Creative Arts Studio is bursting with activity! According to chief crafter and resident Shirl Fitzsimmons, there is something for everyone! A glance at the monthly calendar reveals that the room is used by groups such as the Painters, Needlers, Critters, Crafters, as well as drawing and painting classes. Shirl notes, "The room is spacious and comfortable and has beautiful lighting. Everyone is welcome."

"The room is spacious and comfortable and has beautiful lighting. Everyone is welcome."

The Crafters live up to their name by creating items year-round.

They showcase their goods at the Annual Craft Fair and offer a pop-up shop year round in the Studio. Fiber artists can choose from two groups—the Critters make afghans to donate to local shelters and the Needlers enjoy the company of other yarn lovers as they work on personal projects. The Painters share time together as they create their newest works of art. All residents are welcome to use the space when the groups are not in session.

If crafts aren't your thing, you can still be involved by buying one of their creations. Always open for business, the items are sold via an honor system. The Crafters made an impressive donation of \$5,110 for Benevolent Care in 2018 using the proceeds from their sales. Here's the kicker: all of the items in the craft room came to be via private donations. That's right, every button, sequin, needle and bottle of glue is donated by residents.

There's more to the studio than meets the eye. Need jewelry repaired?

Does your holiday wreath need a face-lift? They can help. Looking for a button or need alterations? Give the Studio a call. They also collaborate with our Wood Shop should the need arise. Gift wrapping is available year round, especially during the holidays. Browse the clearance sale of specialty items and jewelry donated by residents.

In addition, Activities Director Becky Wise uses the space for fun activities like a butterfly nursery and craft projects with holiday themes.

Stop by the Studio and check out the amazing creations and happenings. Feel free to observe while some of the groups meet and enjoy yet another beautiful space in the VIVA Centre.

Kris Kinsey (left) and Bonnie Hughes delight in being a part of the Crafters.



Country Store Offers Treasure Trove of Joy



The Country Store at Mennonite Home is like unwrapping a gift and being pleasantly surprised at what you find inside. A mix between a card store and a small boutique, you can find everything from wreaths to wall hangings, clocks to berry garlands, candles to figurines, pictures to jewelry. There's a wonderful children's section, assorted toiletries, snacks and of course, greeting cards and a large selection of candy.

Originally started by the Mennonite Home Auxiliary more than 30 years ago, the Country Store continues to operate as a fundraiser for special items for resident use. Profits have been used to buy digital pianos, a harp and other musical instruments, stereos & DVD players, books & music on CDs, iPads and gaming systems, cameras, computers, a sewing machine, hymnals, items for special activities—the list goes on and on. Each year staff and residents submit various requests, which must be for the benefit or use of all residents. The aquarium in Juniata is a perfect example. Residents (and visitors) enjoy watching the fish peacefully swim round and round.

Originally started by the Mennonite Home Auxiliary more than 25 years ago, the Country Store continues to operate as a fundraiser for special items for resident use.

The initial goal of the store was to serve residents who may find themselves unable to go out to shop for that special gift. However, the store has become so much more. From the moment they walk in, customers know they will be treated like

family or a good friend. Whether they are there to purchase an item, window shop or chat with one of our wonderful volunteers, they know they are always welcome. Everyone who "works" at the Country Store is a volunteer who takes the time to learn the names of residents and staff. The result is a welcoming, warm feeling that makes the store a regular destination for many.

We all go shopping to pick up those special little items that bring us pleasure. When someone shops at the Country Store, not only are they getting a great value for what they are purchasing;

but also, they are bringing a little bit of sunshine into the lives of our residents through the store's profits. The store is open Monday through Saturday between 10 am and 4 pm, and is open to the public.

QCD Gifting Maximizes Stewardship

The Qualified Charitable Distribution is among the best ways for generous donors over the age of 70½ years of age with an IRA or 401K to support their church and favorite charities, like Mennonite Home Communities.



In 2013, Bob and Joan Nicholson, Woodcrest Villa residents, learned about a new tool to maximize their stewardship.

Home Communities (MHC) boardmember. The video is available at www.mennonitehome.org/qcd.

Joan shares: "I served on the Development Advisory Committee and helped Greg Pierce bring in speakers like Rick Rodgers, CFP, and Virginia Badger, CPA, to explain the advantages of Qualified Charitable Deduction (QCDs). I shared that knowledge with my generous husband, Bob, who did our taxes. As a retired pastor, he was thrilled!"



"I know the importance of charitable contributions to the Benevolent Care program. Donors want to make a difference," shares Joan, who previously served on the Mennonite Home Communities Board of Trustees as well. Although Bob unfortunately

passed away in 2016, Joan continues their tradition of QCD generosity.

Recent tax code changes make QCD gifting even more important because the standard deduction was increased dramatically. Many generous people who once itemized charitable contributions will no longer exceed the standard deduction.

QCD can be an effective way to receive a tax benefit for many.

Originally known as IRA Rollover gifts, QCDs allow donors to contribute a portion of their Required Minimum Distribution to a charitable organization. QCDs also avoid the potential double taxation of Required Minimum Distributions because of the taxation of social security benefits.

The Qualified Charitable Distribution is among the best ways for generous donors over 70½ years of age with an IRA or 401K to support their church and favorite charities, like Mennonite Home Communities. Please call Greg Pierce, Director of Development, at (717) 390-4903 if you have any questions.



2018 HOLIDAY HOOPLA

Residents, children and grandchildren alike enjoyed the festivities during this past holiday season's Holiday Hoopla. An annual happening, the event gives residents the perfect opportunity to invite over their extended families during the holiday break. Staff enjoy the chance to bring smiles to everyone's faces. This year's hoopla featured face painting, games, music, refreshments, a photo booth, movie and special guests including a therapy pig. Attendees also enjoyed visiting the model train display outside the VIVA Bistro and then eating lunch in the bistro itself. During and after lunch, families could enjoy a piano recital by three local sisters.



Mennonite Home Communities

1520 Harrisburg Pike
Lancaster, PA 17601
www.mennonitehome.org

RETURN SERVICE REQUESTED

NONPROFIT ORG
U.S. POSTAGE
PAID
LANCASTER, PA
PERMIT NO. 229

“SOARING” is a quarterly publication of Mennonite Home Communities, 1520 Harrisburg Pike, Lancaster, PA 17601. Mennonite Home Communities is a Pennsylvania non-profit organization. A copy of the official registration and financial information of Mennonite Home Communities of Lancaster may be obtained from the PA Department of State by calling toll free within Pennsylvania 1-800-732-0999. Registration does not imply endorsement. Please note: A donation or contribution to Mennonite Home Communities is purely voluntary. A contribution is in no way a requirement for the institution or continuation of any business relationship with Mennonite Home Communities. Also, a contribution is in no way a requirement for admission or continued stay at the facility. Residents of Mennonite Home Communities will receive the same standard of quality care, the provision of which is not conditioned on any contributions.



soaring

Featured on the cover:

Hilma Mumma, Shirl Fitzsimmons and Shirley Stauffer (left to right) share a laugh while making a craft.

SOARING COMMITTEE MEMBERS:

Connie Buckwalter, Jane Gamble, Kathleen Maule, Daniel Mortensen,
Kim Peters, Greg Pierce, John Sauder

If you would like to receive information about **Residential Living at Woodcrest Villa**, call Cathy at 717.390.4103

If you would like to receive information about **Personal Care or Health Care** at Mennonite Home, call Dawn at 717.390.7979

If you wish to have your name removed from our mailing list, call Kris at 717.735.2647.

24th Annual Golf Outing

THURSDAY, JULY 11 • ROYAL OAKS GOLF CLUB



REGISTER AT:

www.mennonitehome.org/golf

AM Scramble

7:00 AM Registration, 7:30 AM
Shotgun Start, Lunch & Prizes 12:30 PM

PM Scramble

12:30 PM Registration, 1:00 PM
Shotgun Start, Dinner & Prizes 6:00 PM

Please call Kris Hess at (717)735-2647 with questions.